



GREENSEA INDUSTRIES PVT. LTD.
MANUFACTURER OF PHTHALOCYANINE PIGMENTS



Connect Us:

PARESH PATEL

+91 99092 55755

DHAVAL PATEL

+91 99099 29968

Export@greenseapigments.com

Greensea808@gmail.com



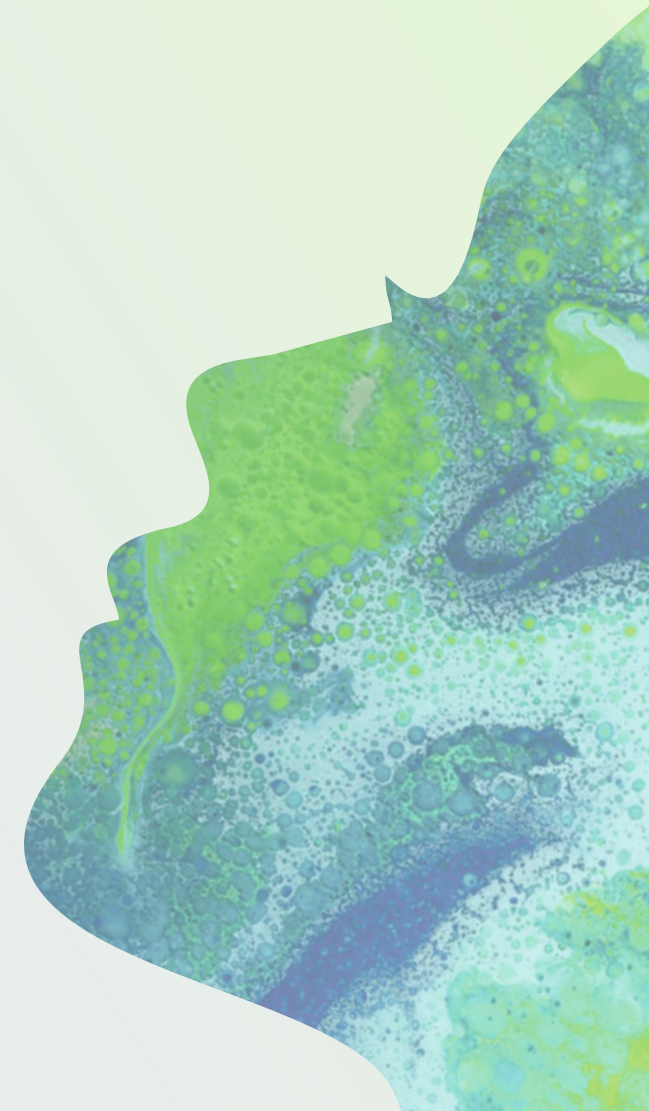
<https://greenseapigments.com/>

Office Address

Shop No.313, 3rd Floor, Star Arcade Complex
Opp. Sky Mall, Shanala Road Morbi,
Gujarat - 363641, India

Factory Address

Village - Shikarpur, Sur.No.71/2,
Taluka Bhachau, Dist - Kutch,
Gujarat - 370 150, India



Greensea industries establishment

Greensea industries private limited was established in the year of the 2013 on date of 03/04/2013. It is combination of different sectors like, pigments and chemical products.

Competitive world of chemicals

In 2013, GreenSea industries pvt ltd started Its journey in the chemicals & pigments Industry, which is known for being very Competitive.

GreenSea Production Started

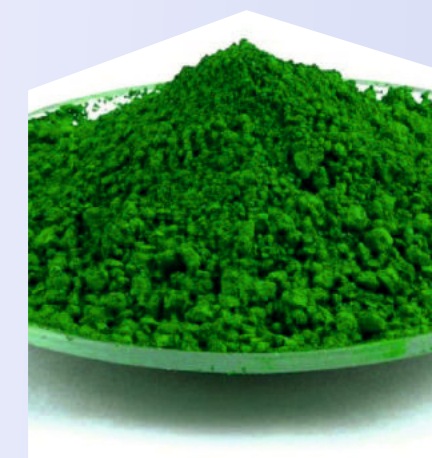
Greensea industries actually started its production in the nov. 2016.it has embedded an impeccable impression in the global pigment and chemical market with its superior quality products.

Greensea's integrity and transparency

Upholding quality, compliance, and environmental standards while remaining competitive sets us apart as a trusted global pigment supplier.

Physical Properties:

Physical Form	Greenish Powder
Specific gravity	2.5 gm/cm ³ (±0.1)
Bulk Density	0.40 gm/cc (±0.1)
pH @10% pigment	6.5 – 9
Sieve Residue @325 mesh	500 ppm max
Moisture Content	Max 1%
Water solubility	Max 1%
Oil Absorption	40-50 %
Heat stability	280 ⁰ c /5 min
Color Shade & Strength	DE :- max 1 , Str.:-100% (±5)



Pigment Green 7

Product Description:

Chemical Class	Copper phthalocyanine
Product Code	GREENSEA FAST GS 0011
C.I. Name	Pigment Green 7
C.I. No	74260
CAS NO	1328-53-6
Chemical Type	Cu, Phthalo Green
Chemical Formula	C ₃₂ H ₂ CL ₁₄ CuN ₈
Molecular Weight	1092 -1127 mg/Mol
Chemical name	Copper, [tetradecachloro-29H,31H-phthalocyanine (2-)-N{29}, N{30}, N{31}, N{32}]-

Fastness & Solvent Properties:

Light fastness	8
Weather fastness	8
Migration fastness	7
Acid Fastness	8
Alkali Fastness	8
Xylene Fastness	8
MEK Fastness	8
MTO Fastness	8
Water fastness	8
Ethanol fastness	8

Grade: - 1 = Poor / 8 =Excellent

APPLICATION

Physical Properties:

Physical Form	Bluish Powder
Specific gravity	2.3 gm/cm ³ (±0.1)
Bulk Density	0.45 gm/cc (±0.1)
pH @10% pigment	6.5 – 9
Sieve Residue @325 mesh	500 ppm max
Moisture Content	Max 1%
Water solubility	Max 1%
Oil Absorption	40-50 %
Heat stability	180°C /10 min
Color Shade & Strength	DE :- max 1 , Str.:-100% (±5)



Pigment Blue



Paint



Rubber & Fiber

Product Description:

Chemical Class	Copper phthalocyanine
Product Code	GREENSEA FAST GS 0103
C.I. Name	Pigment Blue 15.3
C.I. No	74160
CAS NO	147-18-8
Chemical Type	Cu, Phthalo Blue
Chemical Formula	C ₃₂ H ₁₆ CuN ₈
Molecular Weight	576.07 mg/Mol
Chemical name	Cu-Phthalo blue, β-Mod

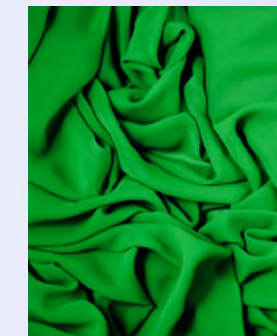
Fastness & Solvent Properties:

Light fastness	8
Weather fastness	8
Migration fastness	8
Acid Fastness	8
Alkali Fastness	7
Xylene Fastness	8
MEK Fastness	8
MTO Fastness	8
Water fastness	8
Ethanol fastness	8

Grade: - 1 = Poor / 8 =Excellent



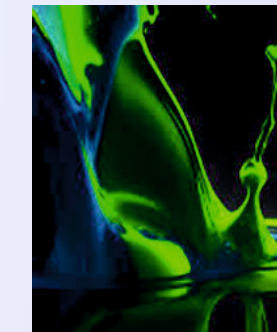
Coating



Textile



Plastic Master Batch



Ink

